



GAT MONTHLY MEMBERSHIP PROGRESS REPORT

Results as of: 9/30/2023

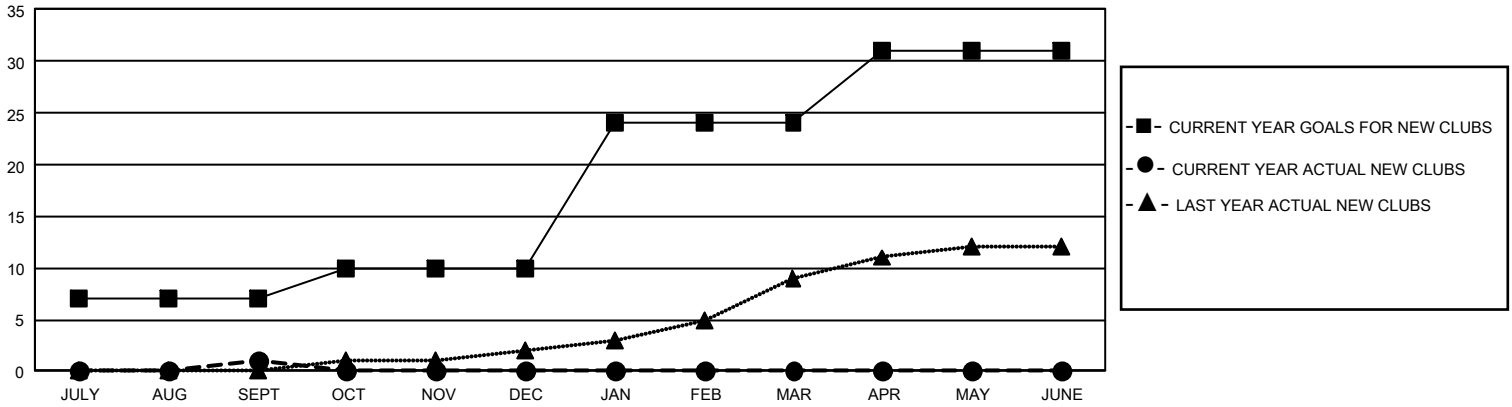
GMT Constitutional Area 5 - J, Group G

REPORT DOES NOT INCLUDE CLUBS IN UNDISTRICTED AREAS.

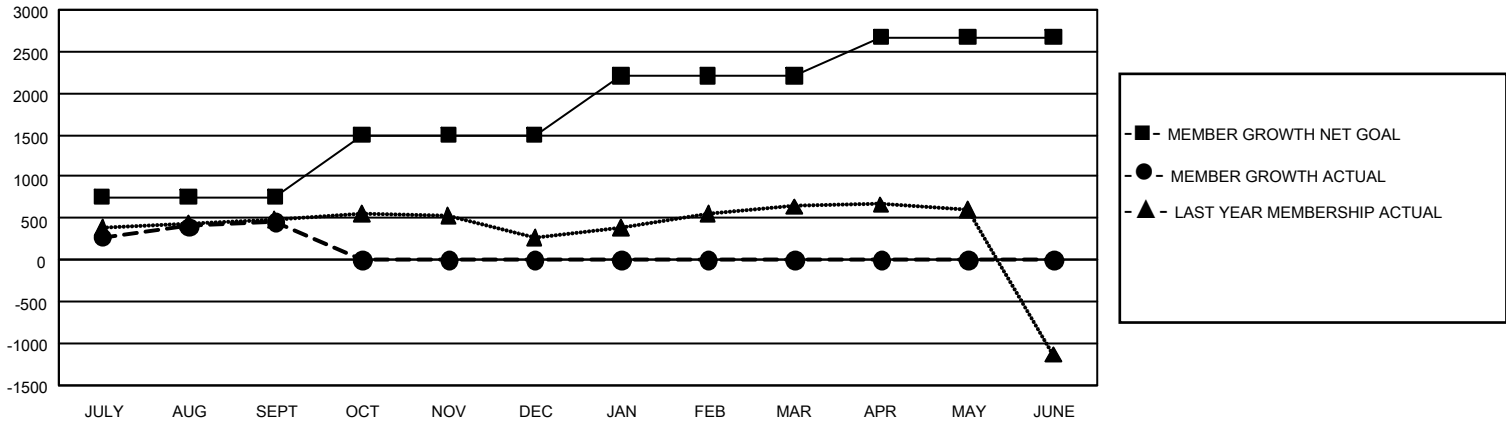
Clubs			
RESULTS FOR 2023-2024			
QUARTER	NEW CLUB GOAL	NEW CLUBS	DROPPED CLUBS
JULY/AUG/SEPT	21	1	0
OCT/NOV/DEC	9	0	0
JAN/FEB/MAR	42	0	0
APR/MAY/JUNE	21	0	0

Members			
RESULTS FOR 2023-2024			
QUARTER	MEMBER GROWTH NET GOAL	MEMBER GROWTH ACTUAL	DROPPED MEMBERS ACTUAL (including transfers)
JULY/AUG/SEPT	758	1,169	661
OCT/NOV/DEC	743	0	0
JAN/FEB/MAR	712	0	0
APR/MAY/JUNE	462	0	0

GOALS AND ACTUAL NEW CLUBS CUMULATIVE



GOALS AND ACTUAL MEMBERS CUMULATIVE



DROPPED CLUBS: 0	512 CLUBS OF 1,255 ADDED 1 OR MORE NEW MEMBERS	<u>GENDER DISTRIBUTION</u>	
<u>DROPPED MEMBERS</u>		MALE	30,203 (76.54%)
DECEASED	83	FEMALE	9,256 (23.46%)
CLUB CANCELLED	0	NON BINARY	0 (0.00%)
OTHER	578	PREFER NOT TO ANSWER	1 (0.00%)
TOTAL	661	TOTAL FAMILY UNIT MEMBERS	12,699
	CLICK HERE FOR CUMULATIVE MEMBERSHIP DATA	FAMILY MEMBERS PAYING HALF DUES	7,178